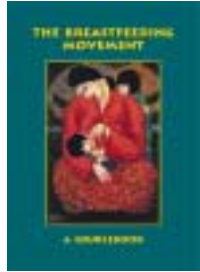


One of our key publications is **The Breastfeeding Movement: A Sourcebook**.



It is a compilation of selected documents significant to the breastfeeding movement & includes selected bibliography, internet resources, key contacts, events, songs, poems, history of the breastfeeding movement and key documents.

Other key WABA publications include the **Maternity Protection Campaign Kit** which is a useful tool to advocate for the protection of and improvements for breastfeeding mothers at workplaces using the ILO Convention 183, and **Healthy Documents** which is a sourcebook on important documents & instruments that impact on people's health

7. Outreach

To keep our partners informed of breastfeeding issues worldwide, **WABALink** - a current awareness service covering news, views & resources on the breastfeeding movement, is produced on a quarterly basis. It is also available online & can be accessed at www.waba.org.my/wabalink.htm

8. Web - networking

In line with WABA's role of information sharing & networking, the *WABA Resource Centre* manages the organisational website www.waba.org.my which serves as an online advocacy and outreach tool to update and exchange information.

Core Partners

The World Alliance for Breastfeeding Action (WABA) is a global network of individuals and organisations concerned with the protection, promotion and support of breastfeeding worldwide, based on the Innocenti Declaration, the Ten Links for Nurturing the Future and the WHO/UNICEF Global Strategy for Infant and Young Child Feeding. Its core partners are:-

- * International Baby Food Action Network
www.ibfan.org
- * La Leche League International
www.la lecheleague.org
- * International Lactation Consultant Association
www.ilca.org
- * Wellstart International
www.wellstart.org
- * Academy of Breastfeeding Medicine
www.bfmed.org
- * LINKAGES
www.linkagesproject.org

For a listing of other useful internet resources, please check out www.waba.org.my/bookmark.htm

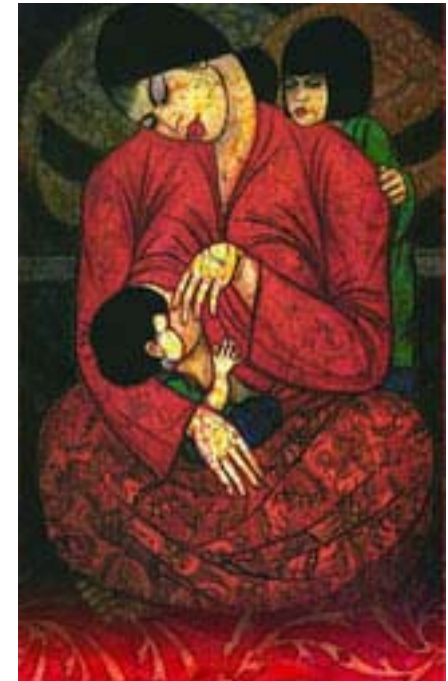
WABA is in consultative status with UNICEF and an NGO in Special Consultative Status with the Economic and Social Council of the United Nations (ECOSOC).

Visit WABA Resource Centre Online:

www.waba.org.my/rc.htm

DRAFT

WABA Resource Centre Penang, Malaysia



World Alliance for Breastfeeding Action

Protects, Promotes and Supports Breastfeeding Worldwide



The World Alliance for Breastfeeding Action

PO Box 1200, 10850 Penang, Malaysia • Tel: 60-4-6584816 • Fax: 60-4-6572655 •
Email: waba@streamyx.com • Website: www.waba.org.my

Visit Our Website: www.waba.org.my

W A B A R E S O U R C E C E N T R E

The WABA Resource Centre aims to provide an efficient, quality service that is responsive to the needs of the WABA Secretariat and its constituency. It is now among the most comprehensive resource centres of its kind, covering Infant and Young Child Feeding issues in the Asia Pacific region.

1. Library

One of our main resources is our **Library** which includes:-

- * Books
- * Reports, Kits, Handbooks, Children's Readers
- * Audio-visual Resources
- * Journals
- * Datafiles

Topics covered in the collection include *Health, Holistic Health Practices, Women's Issues, Children's Issues, Breastfeeding Issues, Infant Feeding and Development Issues.*

2. Clearing House

WABA Resource Centre also manages a Clearing House together with a Sales Centre. These include material especially useful to breastfeeding groups, such as:-

- Books
- Reports
- Brochures
- Articles and posters

3. Publications

The Publications area is one of our active areas. More than 20 publications are available. They include books, reports, brochures, posters and audio-visual materials.

For more information, please refer to our Publications Catalogue, downloadable from www.waba.org.my/publications/Catalogue.pdf



www.waba.org.my

4. Information Technology

With the extensive usage of Information Technology in this day and age, the WABA Resource Centre has a crucial role to consolidate the Library, Publications and IT activities/services of the WABA Secretariat. To achieve this, we are constantly exploring the potential of new information technology, in order to improve our goal of providing and disseminating information.

5. Experts Database

As a *Special Project with UNICEF*, a Database on Experts in the field of breastfeeding and appropriate infant feeding issues was developed and is maintained by the WABA Resource Centre with the aim of making available, updated information about individuals who are experts on breastfeeding and appropriate infant feeding issues for the purpose of consultancies, resource persons for training, etc. For more information about this project, please go to www.waba.org.my/expdirectory.htm

6. Inter library Networking

In expanding global access to information, the WABA Resource Centre is a member of the Penang Libraries Network (PLN). The PLN was set up as a knowledge warehouse portal consisting of an integrated collection of library resources in various public & university libraries within Penang. It is also a form of smart partnership among all librarians of member public and private institutions. The PLN portal is currently accessible at: <http://pln.cs.usm.my>



The World Alliance for Breastfeeding Action (WABA) is a global network of individuals and organisations concerned with the protection, promotion and support of breastfeeding worldwide based on the Innocenti Declaration, the Ten Links for Nurturing the Future and the WHO/UNICEF Global Strategy for Infant and Young Child Feeding. Its core partners are International Baby Food Action Network (IBFAN), La Leche League International (LLL), International Lactation Consultant Association (ILCA), Wellstart International, Academy of Breastfeeding Medicine (ABM) and LINKAGES. WABA is in consultative status with UNICEF and an NGO in Special Consultative Status with the Economic and Social Council of the United Nations (ECOSOC) • PO Box 1200, 10850 Penang, Malaysia
• Tel: 60-4-6584816 • Fax: 60-4-6572655 • Email: waba@streamyx.com • For more information, visit the WABA website at www.waba.org.my